



2009 TRANSIT ADVERTISING KIT



Betsy Waters 304-263-0876 ext. 103
bwaters@pantran.com

Advertising Rates for Pan Tran Vehicles

	Year	Quarter	Month
Window Sign 1 window per bus for 12 months	\$1,200.00	\$ 300.00	\$100.00
½ Side of the Bus one sign per bus 12 months	\$3,600.00	\$ 900.00	\$300.00
Full side of the Bus one sign per bus 12 months	\$7,200.00	\$1,800.00	\$600.00

**The advertiser must pay for their own signs to be made and installed.

Pan Tran Statistics

- Pan Tran buses run an average of 24,000 miles a month.
- Pan Tran runs 3 morning routes and 3 evening routes 5 days a week.
- Pan Tran runs 1 charter 5 days a week on the Shepherd University Campus when school is in session.
- Pan Tran runs 1 Charter Service 2 evenings a week for the VA Medical Center.
- Pan Tran runs 2 buses every Saturday of the month.
- Pan Tran recently expanded Demand Response service with a total of 6 vehicles for Berkeley & Jefferson Counties.
- Pan Tran buses are on the road 5 days a week from 6:00 am to 9:00 pm. Pan Tran buses are on the road from 8:00 am to 5:00 pm on Saturdays.

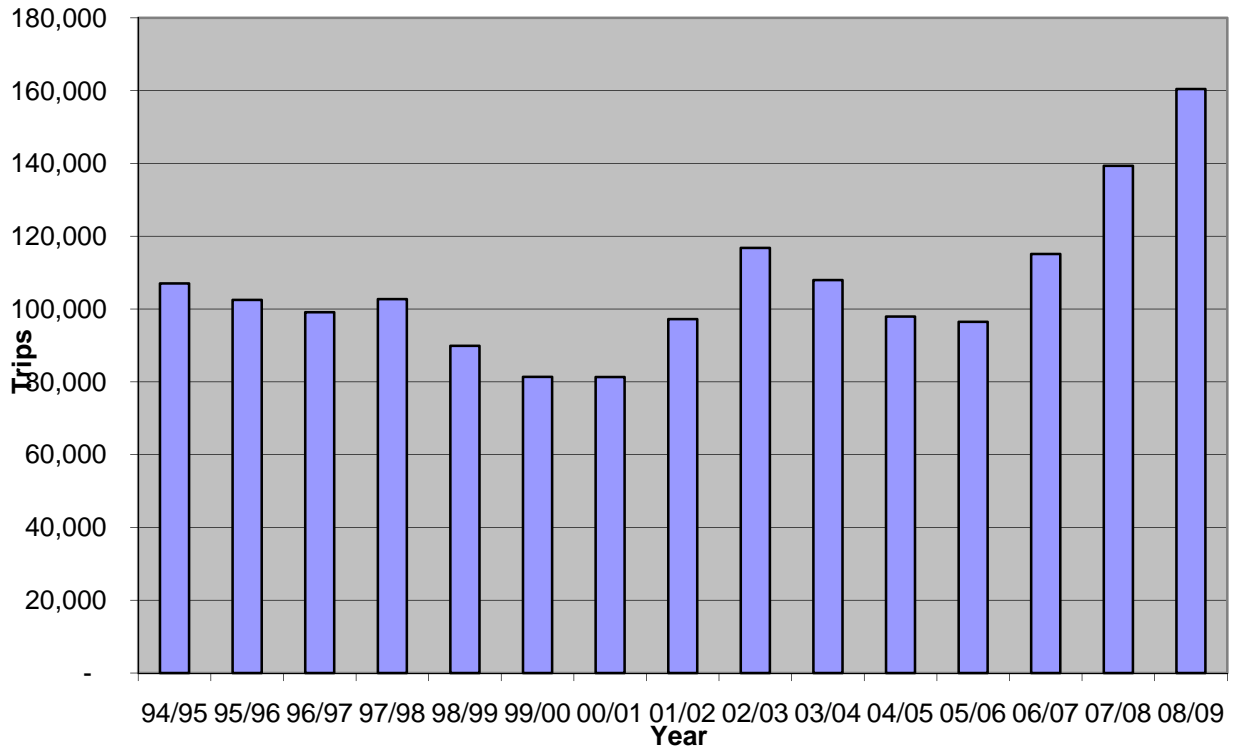
Ridership Statistics

Fiscal Year	Total Miles	Total Passengers	Elderly	Wheel Chair	Handicapped
2005-2006	262,450	96,506	5,224	1,552	8,286
2006-2007	274,031	115,148	8,229	2,155	6,695
2007-2008	295,126	139,356	7,132	1,704	6,750
2008-2009	292,065	160,436	10,763	2,622	6,618
2009-2010 Thru 9/09	92,803	36,490	2,686	506	1,110

By becoming an Advertiser you can help fund additional programs for citizens of our community. Advertising funds are a local match which allows Pan Tran to receive more federal dollars to provide additional services.



Ridership Totals



Orange Line Trips

